

*Making the environments in which we live and work safer, healthier and more productive through advanced data analytics and adaptive systems.*

# Smart Environments Research Center

Core Faculty Meeting

January 28, 2016



# Agenda

- 11:00 Welcome message (Shirin Shahsavand, SERC Manager)
- 11:05 Introducing SERC, its missions and visions (Larry Holder, SERC Director)
- 11:20 Marketing strategies to deliver more benefits to you (Shirin)
- 11:35 ESIC success story (Jody Opheim, ESIC Center Manager)
- 11:50 Q & A
- 12:00 Lunch

*Making the environments in which we live and work safer, healthier and more productive through advanced data analytics and adaptive systems.*

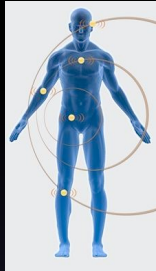
# Introduction

# Mission

Making the environments in which we live and work safer, healthier and more productive through advanced data analytics and adaptive systems.

Official WSU Research Center, approved Feb 2014.

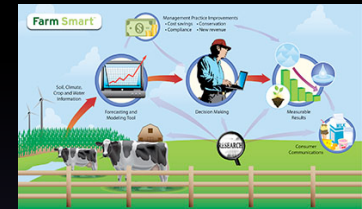
# Smart Environment



Smart Body

Act

Sense



Smart Farm

Analyze



Smart Home



Smart Building



Smart City

# Why a Center?

- Provide a focal point for smart environments related research at WSU
- Accelerate growth and collaboration
  - WSU, other institutions, industry, government
- Further establish WSU as a leader in this area
- Compete for center-level funding

# Vision

Become a globally recognized leader in the study of data analytics and adaptive systems for smart environments.

# Core Faculty



Larry Holder, Professor and Center Director  
holder@wsu.edu  
*Research Areas:* AI, Machine Learning, Data Mining, Network Mining, Bioinformatics, Security



Diane Cook, Professor  
cook@eecs.wsu.edu  
*Research Areas:* AI, Machine Learning, Data Mining, Activity Recognition, and Prediction



Janardhan (Jana) Doppa, Assistant Professor  
jana@eecs.wsu.edu  
*Research Areas:* AI, Machine Learning, Data-Driven Science, Assistive Technologies for Smart Environments, Graph Mining, Bioinformatics, and Health-Informatics



Hassan Ghasemzadeh, Assistant Professor  
hassan@eecs.wsu.edu  
*Research Areas:* Embedded and Cyber Physical Systems, Pervasive Computing, Algorithm Design, Wearable Systems, System-Level Design and Optimization, and Smart Health



Ananth Kalyanaraman, Associate Professor  
ananth@eecs.wsu.edu  
*Research Areas:* Bioinformatics/Computational Biology, High-Performance Computing, Data Science, and Graph and String Algorithms



Subhanshu Gupta, Assistant Professor  
sgupta@eecs.wsu.edu  
*Research Areas:* Broadband Communications, Adaptive Sampling Techniques, Radio Frequency Transceivers, Low Power Flexible Integrated BioSensors



Matthew Taylor, Assistant Professor  
Allred Distinguished Professorship in Artificial Intelligence  
taylorm@eecs.wsu.edu  
*Research Areas:* Intelligent Agents, Multiagent Systems, Reinforcement Learning, Transfer Learning, and Robotics



Shuiwang Ji, Associate Professor  
sjj@eecs.wsu.edu  
*Research Areas:* Machine Learning, Data Mining, Computational Biology, and Computational Neuroscience



Maureen Schmitter-Edgecombe, Professor  
schmittere@wsu.edu  
*Research Areas:* Clinical and Cognitive Neuropsychology, Everyday Functioning, Memory and Executive Abilities, Rehabilitation, Smart and Assistive Technologies, and Aging and Cognitively Impaired Populations



Behrooz Shirazi, Professor and School Director  
School of EECS, WSU  
*Research Areas:* Sustainable Computing, Pervasive Computing, Wireless Sensor Networks



*Making the environments in which we live and work safer, healthier and more productive through advanced data analytics and adaptive systems.*

# Marketing Strategies

*Making the environments in which we live and work safer, healthier and more productive through advanced data analytics and adaptive systems.*

# ESIC Success Story



*Making the environments in which we live and work safer, healthier and more productive through advanced data analytics and adaptive systems.*

# Q & A

*Making the environments in which we live and work safer, healthier and more productive through advanced data analytics and adaptive systems.*

# Thank you!

For more information

[serc.wsu.edu](http://serc.wsu.edu)